



CAPCOG Mock Inspection Training

UPPER ALLEN TOWNSHIP

Thank you Upper Allen for Hosting this Workshop!

- ▶ Extra special thanks to
 - ▶ Megan McNamee
 - ▶ CapCOG
 - ▶ NFWF

My Background

- ▶ Water Resources Designer (Engineer in Training) based out of the Center for Watershed Protection's Pennsylvania office
- ▶ I spent almost four years working for the PA DEP developing and implementing the MS4 program
- ▶ At the PA DEP, I performed numerous trainings, developed written guidance documents, conducted MS4 field and office inspections, and assisted in EPA MS4 audits
- ▶ I have worked “on-the-ground” with municipalities all across the Commonwealth of Pennsylvania to further develop all aspects of their MS4 program
- ▶ I have a M.S. in Water Resource and Environmental Engineering from Villanova University, and five years of experience in stormwater design, erosion and sediment control, and permitting

The Center for Watershed Protection

- ▶ Founded in 1992, the Center for Watershed Protection, Inc. is an award-winning national 501(c)(3) nonprofit organization that works to protect, restore, and enhance our streams, rivers, lakes, wetlands, and bays
- ▶ Our work includes applied research, direct assistance to communities, training, and access to a network of experienced professionals
- ▶ The Center is a recognized leader in providing technical assistance to local governments with developing cost-effective and realistic strategies to meet TMDL and MS4 goals

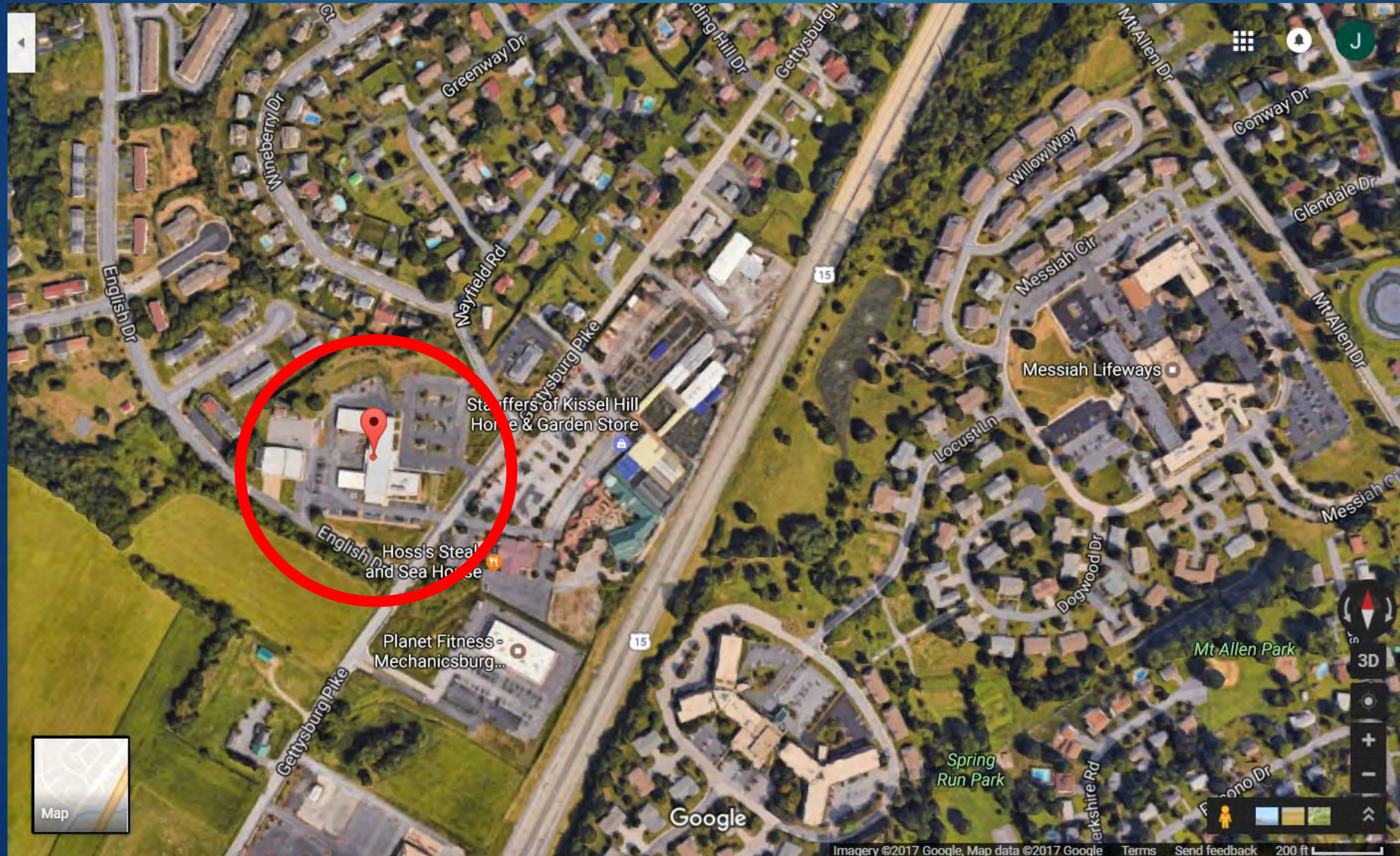
The Center for Watershed Protection – PA Specific Work

- ▶ Multi-municipal TMDL and PRPs for York County, Blair County, and Lebanon County, and the Wyomissing Creek Watershed Coalition
- ▶ Working with CapCOG towards standardization of MS4 materials
- ▶ Working with the William Penn Foundation and NFWF in the Delaware River Watershed Initiative
- ▶ Participated in numerous Chesapeake Bay Expert Panels for the development of BMP calculation techniques that are used for TMDL and PRPs
- ▶ Reviewing TMDL and PRP methodologies to recommend steps forward
- ▶ Numerous online and in-person trainings on developing PRPs, IDDE, and other topics
- ▶ Worked for the PADEP to provide trainings on TMDL compliance
- ▶ Design of stormwater BMP retrofits implemented in Lancaster County, Berks County, and Philadelphia

Workshop Overview

- ▶ For this workshop we would like for everyone to:
 - ▶ Have a grasp of exactly what should be in a written plan for MCM #6 by:
 - ▶ Reviewing what the permit requires
 - ▶ Walking through a Public Works facility to associate site conditions with the permit requirements
 - ▶ Understand the MS4 audit process and what to expect
 - ▶ Actively participate and feel free to ask questions throughout
 - ▶ Our focus is on the mock inspection but we can reserve time at the end for questions about any other topics

Upper Allen Municipal Building



Site Background


MS4 Requirements

BACKGROUND

Municipalities and other entities such as universities and prisons that meet certain standards must obtain NPDES permit coverage for discharges of stormwater from their municipal separate storm sewer systems (MS4s).

A municipal separate storm sewer is any conveyance or system of conveyances (including but not limited to streets, ditches, and pipes) that is: owned by a municipality or other public body (created under state law) having jurisdiction over disposal of sewage, industrial wastes, stormwater or other wastes; designed or used for collecting or conveying stormwater; not a combined sewer (i.e., not intended for both sewage and stormwater); AND not part of a publicly owned treatment works (POTW).

Additional information regarding permitting requirements can be found at the [Pennsylvania Municipal Stormwater Homepage](#).

Help is available by clicking the question mark  icon in the header.

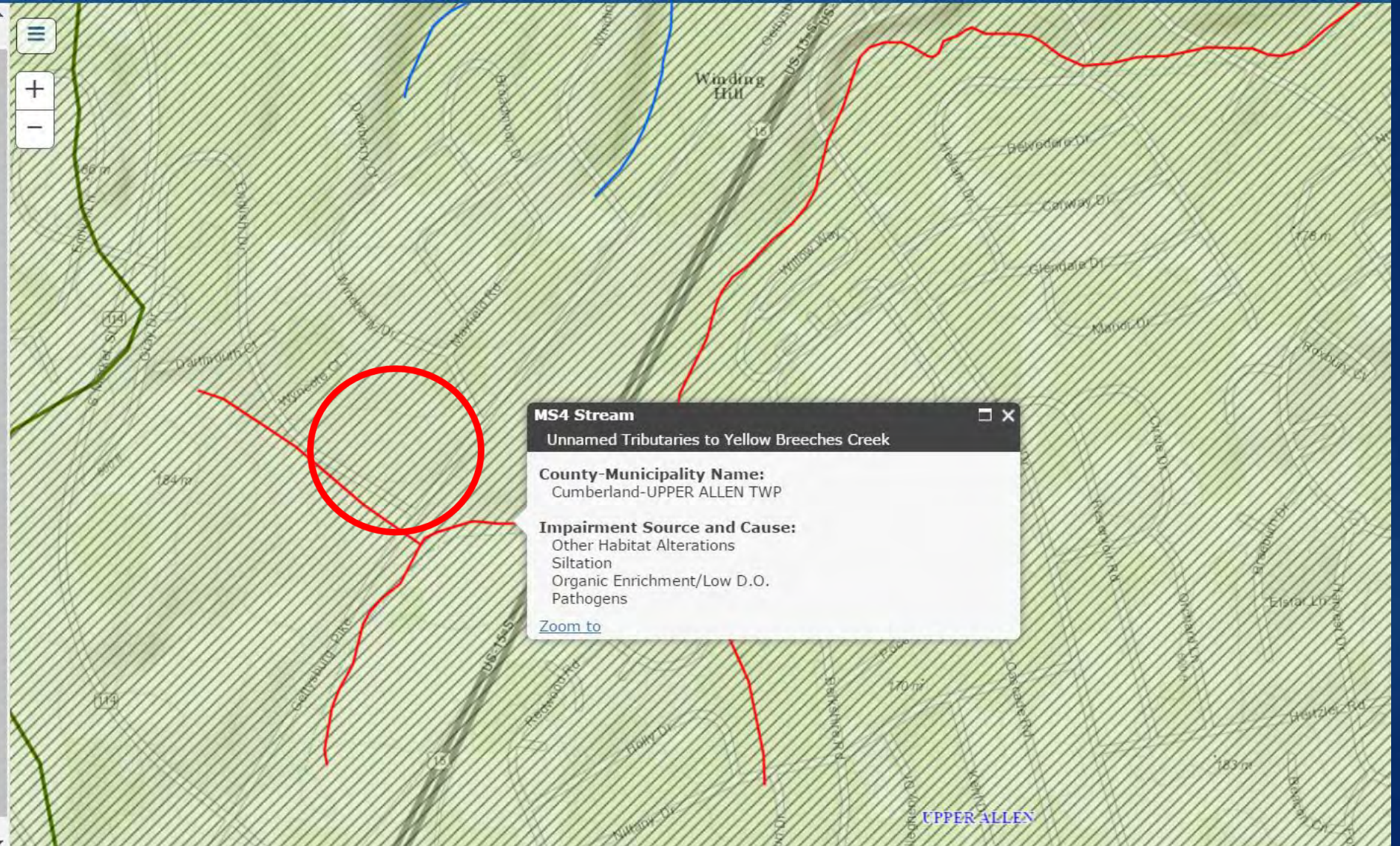
Select a County

CUMBERLAND

Select a Municipality

UPPER ALLEN TWP

Click to View Features



MS4 Requirements Web-based Application

- ▶ Let's take a look online

MS4 Requirements Table



MS4 Name	NPDES ID	Individual Permit Required?	Reason	Impaired Downstream Waters or Applicable TMDL Name	Requirement(s)	Other Cause(s) of Impairment
Cumberland County						
UPPER ALLEN TWP	PAG133708	No		Chesapeake Bay Nutrients/Sediment	Appendix D-Nutrients, Siltation (4a)	
				Cedar Run	Appendix B-Pathogens (5), Appendix E-Nutrients, Siltation (5)	Other Habitat Alterations (4c)
				Unnamed Tributaries to Yellow Breeches Creek	Appendix E-Organic Enrichment/Low D.O., Siltation (5)	Other Habitat Alterations (4c)
				Unnamed Tributaries to Cedar Run		Flow Alterations (4c)
				Yellow Breeches Creek	Appendix B-Pathogens (5)	

MS4 Aggregation Table



MS4 Name	Permit Number	HUC 12 Name	Impaired Downstream Waters or Applicable TMDL Name	Requirement(s)
Cumberland County				
UPPER ALLEN TWP	PAG133708	Lower Yellow Breeches Creek, Middle Yellow Breeches Creek	Cedar Run, Chesapeake Bay Nutrients\Sediment, Unnamed Tributaries to Yellow Breeches Creek, Yellow Breeches Creek	Appendix D-Siltation/Nutrients, Appendix E-Nutrients, Organic Enrichment/Low D.O., Siltation
		Trindle Spring Run	Chesapeake Bay Nutrients\Sediment	Appendix D-Siltation/Nutrients
		Lower Yellow Breeches Creek	Cedar Run, Yellow Breeches Creek	Appendix B-Pathogens
		Lower Yellow Breeches Creek, Middle Yellow Breeches Creek	Cedar Run, Chesapeake Bay Nutrients\Sediment, Unnamed Tributaries to Yellow Breeches Creek, Yellow Breeches Creek	Appendix D-Siltation/Nutrients, Appendix E-Nutrients, Organic Enrichment/Low D.O., Siltation

Site Background


MS4 Requirements

BACKGROUND

Municipalities and other entities such as universities and prisons that meet certain standards must obtain NPDES permit coverage for discharges of stormwater from their municipal separate storm sewer systems (MS4s).

A municipal separate storm sewer is any conveyance or system of conveyances (including but not limited to streets, ditches, and pipes) that is: owned by a municipality or other public body (created under state law) having jurisdiction over disposal of sewage, industrial wastes, stormwater or other wastes; designed or used for collecting or conveying stormwater; not a combined sewer (i.e., not intended for both sewage and stormwater); AND not part of a publicly owned treatment works (POTW).

Additional information regarding permitting requirements can be found at the [Pennsylvania Municipal Stormwater Homepage](#).

Help is available by clicking the question mark  icon in the header.

Select a County

CUMBERLAND

Select a Municipality

UPPER ALLEN TWP

Click to View Features

