

**Stream Erosion and Sediment Control
in MS4-Affected Municipalities**

Presented by
Todd Moses, Geomorphologist

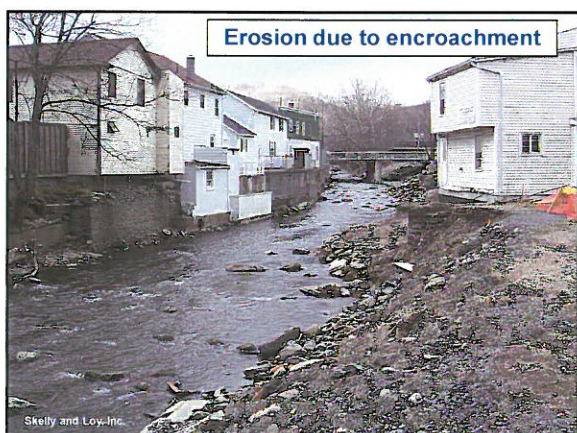


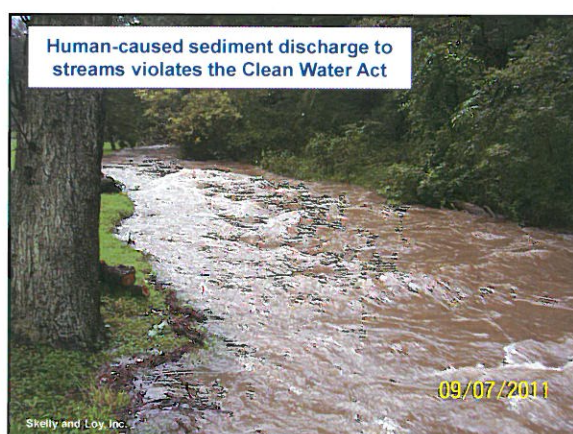
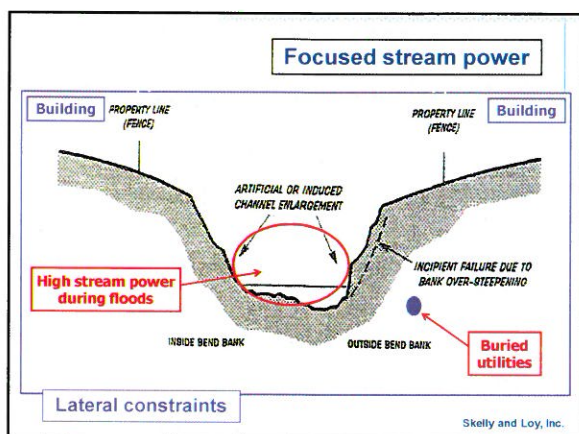
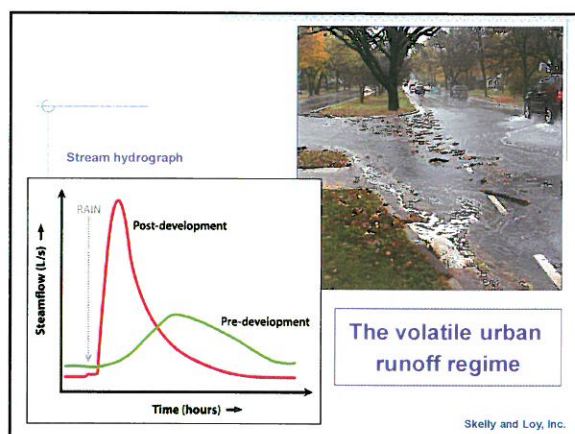
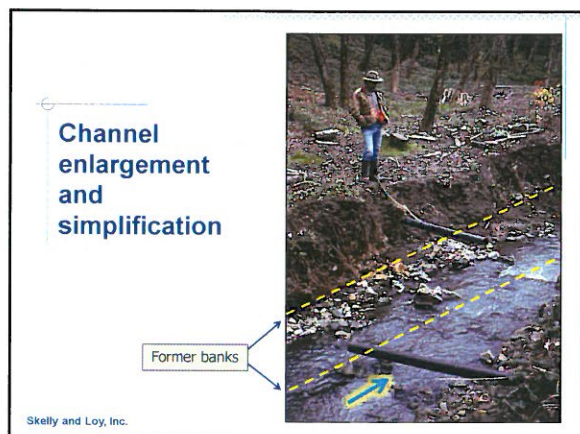
Skelly and Loy, Inc.

Impacts to Streams in Urban Areas

- Land-use history (logging / farming era legacy effects)
- Channelization and stream burial
- Confinement by urban infrastructure
- Urban water flow and sediment regimes
- Chemical and sediment pollution
- Neglect

Skelly and Loy, Inc.





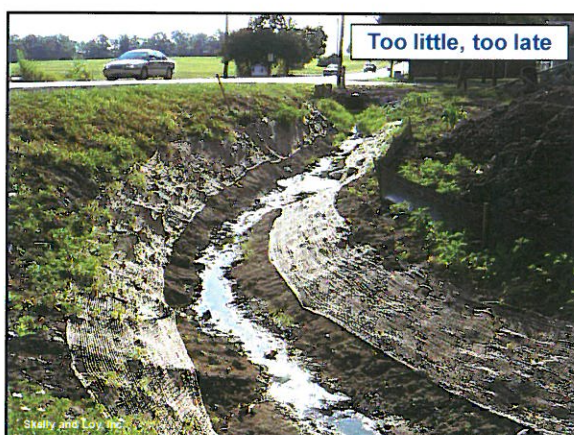


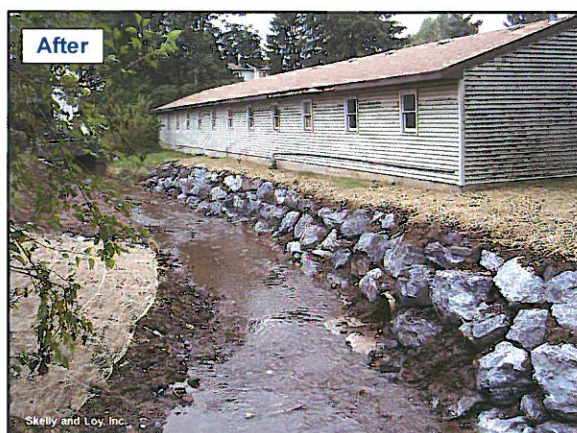
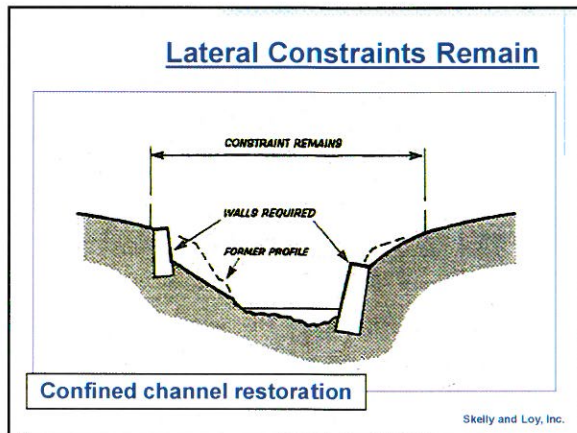
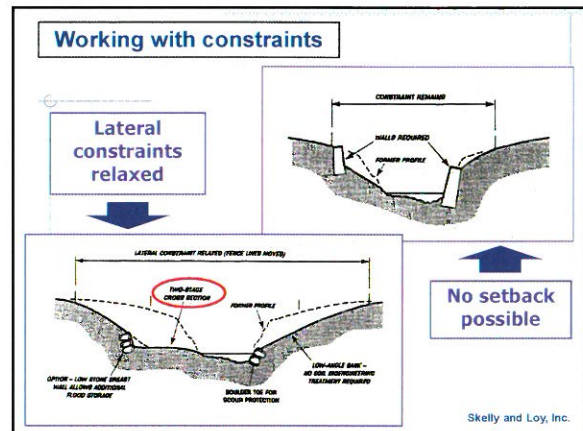
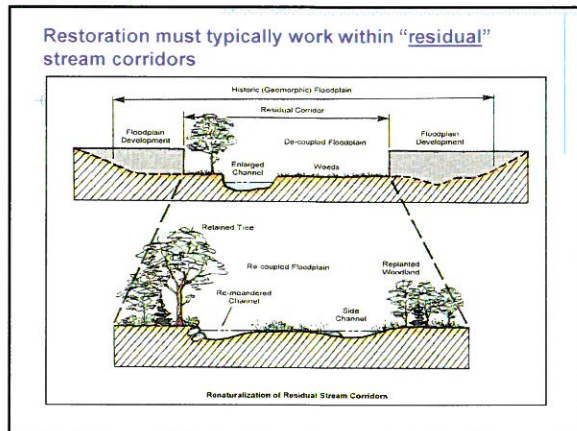
Urban Stream Corridor Rehabilitation

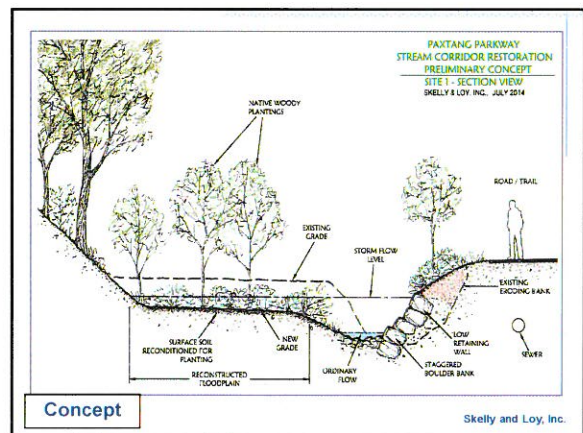
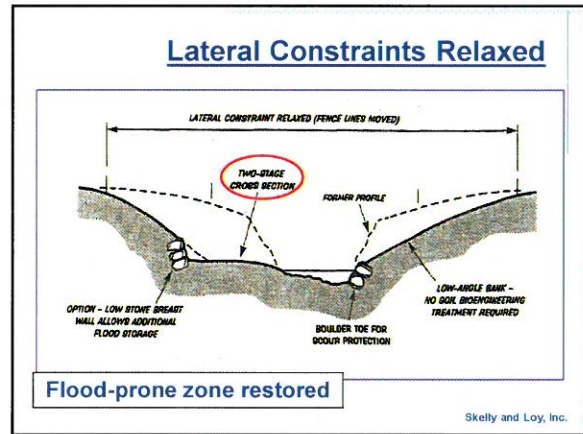
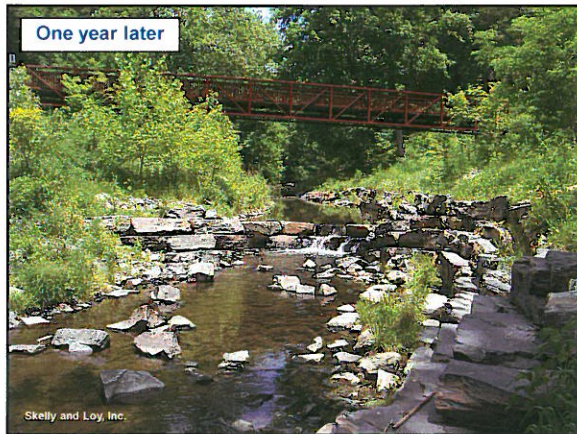
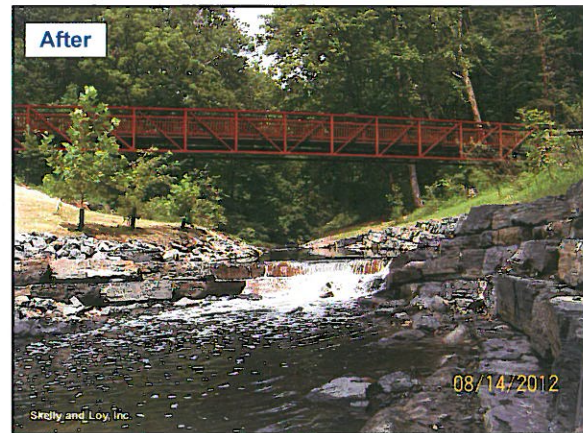
What are reasonable restoration objectives?

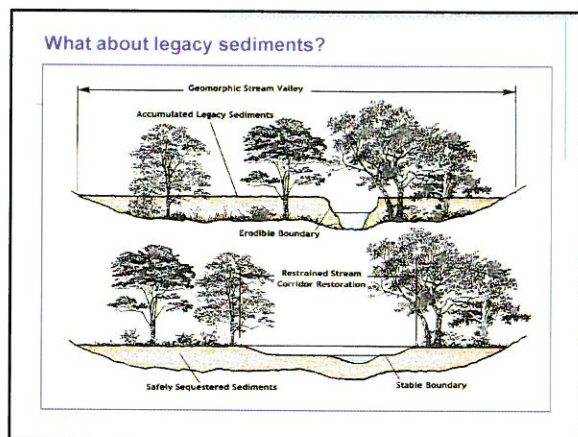
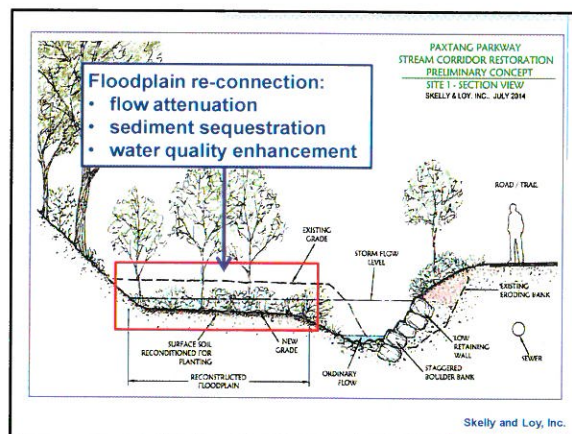
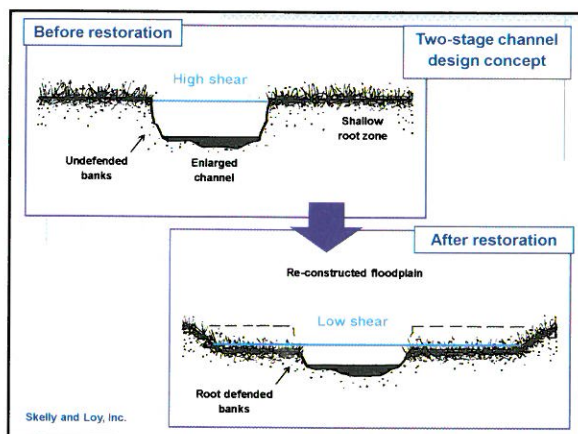
- Reduce pollutant input to streams (sediment / chemicals)
- Infrastructure protection (utility pipes / roads / buildings)
- Amenity / recreation enhancement
- Long-term reliability of the intervention
- Fish and wildlife enhancement (for urban-adapted species)

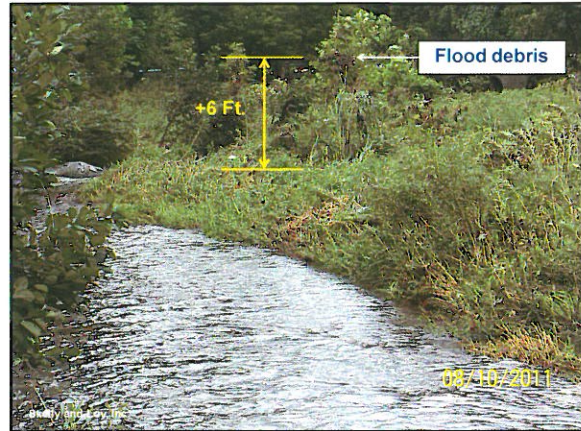
Skelly and Loy, Inc.











Questions / Discussion

Carrol Ehrhart, RLA
cehrhart@skellylov.com

Mike Lower, P.E.
mlower@skellylov.com

Todd Moses, Geomorphologist
tmoses@skellylov.com

Skelly and Loy
Engineering and Environmental Consultants
Suite 300
Harrisburg, PA 17111
Telephone: (717) 232-0593

Skelly and Loy, Inc.